

A House Drawing. (doll house style)

A House and land cut away.

We would prefer it was produced in Coral draw 11 or above, in a cdr format.

You will see on the sample drawing below the style, however the sample offered is just a starting point, it must be improved meaning the drawings themselves, rounded corners, better views, just better drawn.

We are looking for a professional look, not a corporate look.

We don't want bold colour, very little colour will be used, if any off white.

Drawing! Is what this project is a drawing project? Perfect for an illustrator I would imagine. There will be a need for us to agree the style as I mentioned the sample is the starting point and the type of style we are looking for to start from. However there is a need to make things look much better.

What is it going to be used for?

For a web site mainly, so keeping the image size down is a must, while keeping a great image.

How do we want it to look?

See the **samples** and **improve the drawing**, yes copy the idea for my sample project, just make the drawing better, for example a chair can look many different ways. I want it to look like a chair. We can work together to find the right style.

How will this work?

Once I am sure you can draw the images in need, **via sample/demo**.

I will ask you to draw a room, send it to me I will feedback what changes are to be made.

Once we have an agreed style I will ask you to complete the next room/area, I approve it then we move to the next and so on.

The Concept

Area's/ zones (12)

Roof, Loft , Stairs/landing, Bathroom, Bedroom, Lounge, hall/stairs, Kitchen, cellar/stairs garden, drive.

Start image will be a cut away house (front cut away like a dolls house)

Here are the areas:

Roof, chimney, tiles, roof window, solar panel

Loft, half timber work and the other half play room, Train set for example, settee, table, flowers with some colour. Roof light

Stairs from the loft to the first floor.

There will be the house, plus Garden & Drive, this represents area's of interest to be used on a web site.

Once an area is clicked on, for example the bathroom (on the main house image) the bath room will become a larger version on another.

All the rooms could be made from the same template, I mention this as once the room/area becomes the enlarged version I need extra detail, show the ceiling with the joists and the walls show plasterboard and timber on the internal walls, the out side wall will show plaster board, brick cavity then brick again.

Then the floor in each room will show timber floor, floor joists. With exception to the cellar of course which will show earth around it and earth below, just the ceiling will show the joists and timber floor above.

What's in each room?

Roof sky light, chimney, dormer

Loft chair, settee, bookshelf, train set.

Stairs/Middle zone

1st Floor

Middle zone/ landing first floor, doors, electric socket

Bedroom bed, wardrobe, radiator, window, picture, electric socket, draws, Door, Ash wood floor.

Bathroom shower/bath, toilet, wash basin, modern heated towel rail, mirror, cabinet, door, white tiles light grey grout.

Stairs down to ground.

Ground floor

Hall- stairs, doors, electric socket flowers, (colours)

Lounge settee, flat screen tv, Coffee table, window, radiator, electric socket, door light wood floor.

Kitchen units, cooker, fridge, sink, kettle, boiler, radiator, electric socket, door, light tiles

Below ground

Cellar- male den, computer room, train set-radiators, electric socket, door

Outside area

Garden- garage, tree, plants, patio/ decking

Drive- block paving

All item made must be English spec, sockets, radiators, etc.

Make things an "electric socket" for example could be copied and pasted into each room, meaning only one made, with small adjustments needed.

Most of the items will be there as a reference, for example a customer with a leaking radiator in the bedroom would do the following: view the house, click on the bedroom area which opens in to a larger version, then mouse over the radiator will give an information box of service attached to this item. Telling the customer what they need to ask us to do, offer Help!

How will it all work together?

One main house with garden and drive on a web page, click on an area. For example the bathroom. Click a small image become a bigger version of the original drawing, this will open on another page. Now you can mouse over the drawing, information on the object in the room will show, giving further information of services, who they need, what we can offer and maybe even advice if we don't cover an area.

The working project

So we have a innovative idea's, with your help we will have a Peron who is passionate about this innovative idea and wants to turn out great work. I also need someone who can make the rooms work in a 3d way and fit the rooms together in the main house image. See house sample image below.

Size of the images & Quality

Format would be best in .cdr however, as long as we are able to enlarge the enlarge without loosing quality, the site to place these image has not been built yet so the full original work will be needed, we will make change later.

Why

Because I want to sell my service over the internet, I want more female customers this site will be a great help in selling construction work to them as they can use the drawing to identify the area for repair. I can offer this service without dubbing it down which benefits everyone. And my passion for being the best, being different and getting the best customers by using innovative idea's.

Samples

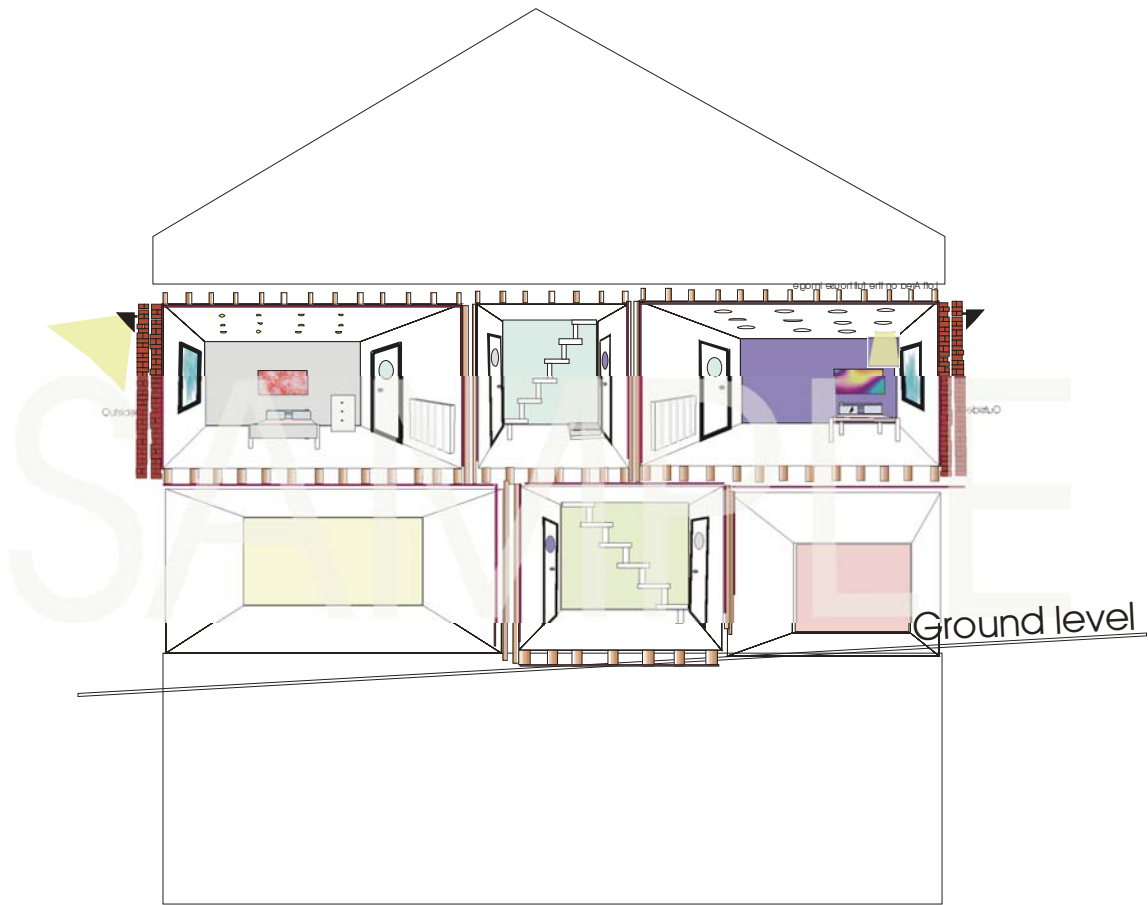
This job requires a sample drawing of a bathroom, before we are able to go ahead.

Time

I need this work done quickly, I estimate up to 4 days work to produce this house.

Drawing

Im not looking for anything corporate, so forget what the other 90% of people are after, please contact me if you need any further information I would be happy to help.

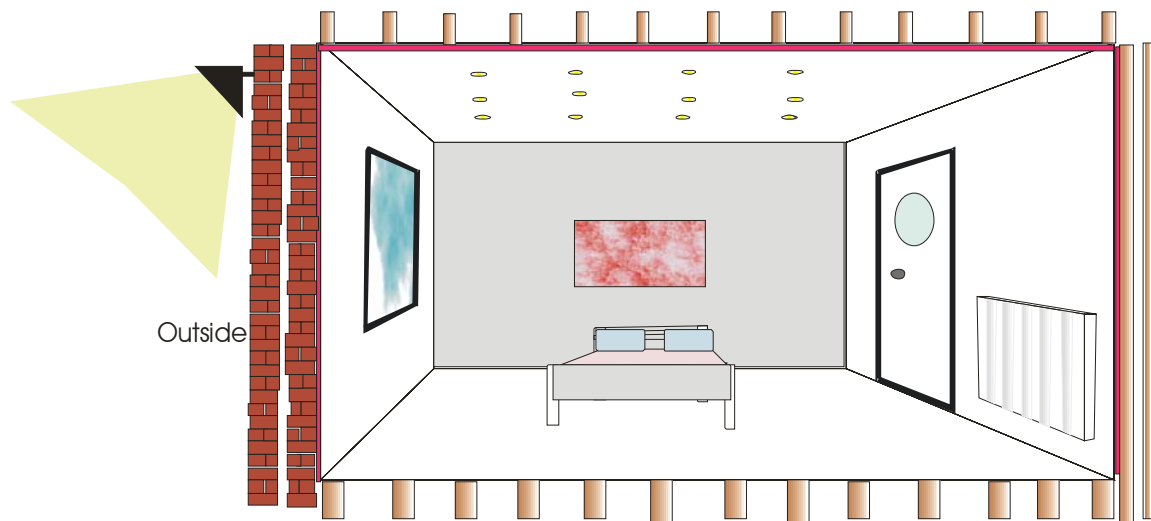


A rough drawing of the bedroom, the socket is missing, skirting, draws. Light switch, window view. You will notice around the room are bricks (showing the outside wall and cavity) also showing a level of imperfection which all out side walls have.

The internal wall shows plaster boards, timber then plasterboard. On the ceiling you will see plasterboard, sunk in lights needed in all rooms then the loft construction and not a floor (shown by the size of the timbers 4x2 smaller than the floor joists) and on the floor shows the joists (9x3). The timber colour is to strong, the brick colour to strong, everything but the back wall, will be light colours.

You will also notice there is no flooring in this room, as the brief states this will be an ash wood floor (white wood effect).

Only the lines of the room and outside of item will be in sharp black. Giving a clean feel to each room, a feeling of room and space.



Notice white walls accept the back wall, this is good. Please contact me with your version/ demo of this room.

The Drawing you see is a sample of the style only, not the drawing quality which in this case is poor.

Thanks